



PLYMOUTH - St MALO Rally – Thursday 2nd August 2018

Organising Authority: The Royal Western Yacht Club of England

1 NOTICE OF PURSUIT

1.1 RULES

Rule 10 of the International Regulations for Preventing Collisions at Sea (Separation Zones) shall be strictly observed.

The ISAF Offshore Special Regulations Category 3 shall apply. Additionally boats shall carry a life raft in accordance with ISAF Offshore Special Regulations 4.20.2

The Dockyard Port of Plymouth Order (DPPO), the Plymouth Local Notices to Mariners (PLNTM), and any local regulations within other ports shall apply. In particular, regulations regarding the safe navigation of large vessels shall be strictly observed. Details of the DPPO and PLNTM are displayed on the RWYC notice board and website.

The Series will be governed by the rules as defined in The Racing Rules of Sailing.(RRS).

RRS are changed as follows..

IRC Rule 22.4.2 is replaced with:

“The maximum number of crew that may sail aboard a boat shall be the crew number printed on the IRC certificate plus two. There is no weight limit.”

1.1.5 The World Sailing Offshore Special Regulations (OSR) Category 4 shall apply. (www.sailing.org/specialregs). Additionally, boats shall carry a life raft in accordance with World Sailing Offshore Special Regulations 4.20.2.

1.2 ELIGIBILITY AND ENTRY

Open to all boats of Division CRUISER, IRC, ORC & MOTORCRUISER:

- IRC DIVISION – for yachts with a current IRC certificate.
- ORC DIVISION - for yachts with a current ORC certificate.
- CRUISER DIVISION – for yachts holding a current Port Handicap issued by the Port of Plymouth Sailing Association (PPSA).

The current list of Port Handicaps (Port TCF) can be found at:
<http://plymouthsailingassociation.org.uk/racing/handicap-list>

If an entrant does not have a PPSA Port Handicap, they should apply to the PPSA Port Handicapper, Tony Head; email tony-head@lineone.net as soon as possible.

- MOTORCRUISERS RALLY – Motorcruisers can accompany as part of the rally to St Malo (Free!) – we ask that you stay in contact throughout your cruise over with the race organization (VHF Channel 77)

Eligible boats may enter by completing the RWYC Pursuit Entry Form and sending it, together with the required fee, to the RWYC by Wednesday 1st August 2018.

1.3 **FEES**

Entry Fee for:	RWYC members	Non-members
St Malo Pursuit – All classes excluding Motorcruisers	£ 20	£ 30

1.4 **SCHEDULE:**

Dates:

Pursuit	Date	Start
Plymouth – St Malo	3 rd August	18:30 - onwards
<i>SUGGESTED START TIME IS 18:30 ON THURSDAY 2nd August.</i>		

1.5 **RADIO COMMUNICATIONS**

All boats shall carry and operate a VHF radio and entrants should use Channel 77.

1.6 **THE COURSE**

From the Eastern entrance of Plymouth Sound Breakwater to Port then to the Finish Line off St Malo – which leaves the *Plateau Rance Nord BUOY* (See Appendix 1)(to Starboard at a bearing of 270 degrees.

1.7 **THE START**

The Start Line will be the Eastern entrance to Plymouth Sound on a bearing of 270 degrees (T).

Entrants will self start and record their starting time.

1.8 **THE FINISH**

The finish will be *Plateau Rance Nord BUOY*(see Appendix 1) (48 °38'.64N 02°02'.35W) bearing 270, leaving the buoy to STARBOARD.

The finish line will not be manned and all boats must take their own times in BST, together with the names and sail numbers of the boats ahead and astern of them when ascertainable. The start and finish times shall recorded on the declaration form below and handed to Hannah Hayward on yacht Kotuku or Andy Sinclair on Sunburst as soon as possible after finishing. If there is trouble finding who to hand them to please call Hannah on +447456215001.

1.9 **PRIZES**

A prize will be presented to the winner of each class on Friday 3rd at the SMBSM at bar L'Atterage. There will be prizes for all those involved in the rally!

1.10 **DISCLAIMER OF LIABILITY**

A boat is entirely responsible for her own safety, whether afloat or ashore, and nothing, whether in the Notice of Pursuit or Sailing Instructions or anywhere else, reduces this responsibility.

It is for a boat to decide whether she is fit to sail in the conditions in which she will find herself. By launching, or going to sea, the boat confirms that she is fit for those conditions and her crew is competent to sail and compete in them.

Nothing done by the organisers can reduce the responsibility of the boat nor will it make the organisers responsible for any loss, damage, death or personal injury, however it may have occurred, as a result of the boat taking part in the racing. The organisers encompass everyone helping to run the Pursuit and the event, and include the organising authority, the RWYC, the Pursuit officer, patrol boats and beachmasters.

The boat is responsible to ensure that she is equipped and seaworthy so as to face extremes of weather; that there is a crew sufficient in number, experience and fitness to withstand such weather; and that the safety equipment is properly maintained, stowed and in date and that the crew knows how to use it.

SAILING INSTRUCTIONS

1.11 RULES

1.12 The World Sailing Offshore Special Regulations (OSR) Category 4 shall apply.
(www.sailing.org/specialregs). Additionally, boats shall carry a life raft in accordance with World Sailing Offshore Special Regulations 4.20.2.

1.13 NOTICES TO ENTRANTS

Notices to entrants will be posted on the notice board at the RWYC.

Should there be any amendments to the Sailing Instructions, Flag L will be hoisted at the appropriate club's flagstaff and it will be the responsibility of all entrants to obtain the amended instructions from that club. Any amendment will be made by 2100 on the day before it will take effect.

1.14 THE COURSE

From the Eastern entrance of Plymouth Sound Breakwater to Port then to the Finish Line off St Malo – which leaves the *Plateau Rance Nord BUOY* (See Appendix 1)(to Starboard at a bearing of 270 degrees.

1.15 THE START

The Start Line will be the Eastern entrance to Plymouth Sound on a bearing of 270 degrees (T).

Entrants will self start and record their starting time.

1.16 THE FINISH

The finish will be *Plateau Rance Nord BUOY*(see Appendix 1) (48 °38'.64N 02°02'.35W) bearing 270, leaving the buoy to STARBOARD.

The finish line will not be manned and all boats must take their own times in BST, together with the names and sail numbers of the boats ahead and astern of them when ascertainable. The start and finish times shall recorded on the declaration form below and handed to Hannah Hayward on yacht Kotuku or Andy Sinclair on Sunburst as soon as possible after finishing. If there is trouble finding who to hand them to please call Hannah on +447456215001.

1.17 TIDAL DATA (LOCAL) – See APPENDIX 2 ***IMPORTANT*******

1.18 RETIREMENT

Boats retiring shall inform the RWYC as soon as possible.

Retirements may be reported by telephone call or text to the RWYC - Beth Hayward +447456020332 or Hannah Hayward +447456215001

1.19 RADIO COMMUNICATIONS

All boats shall carry and operate a VHF radio.

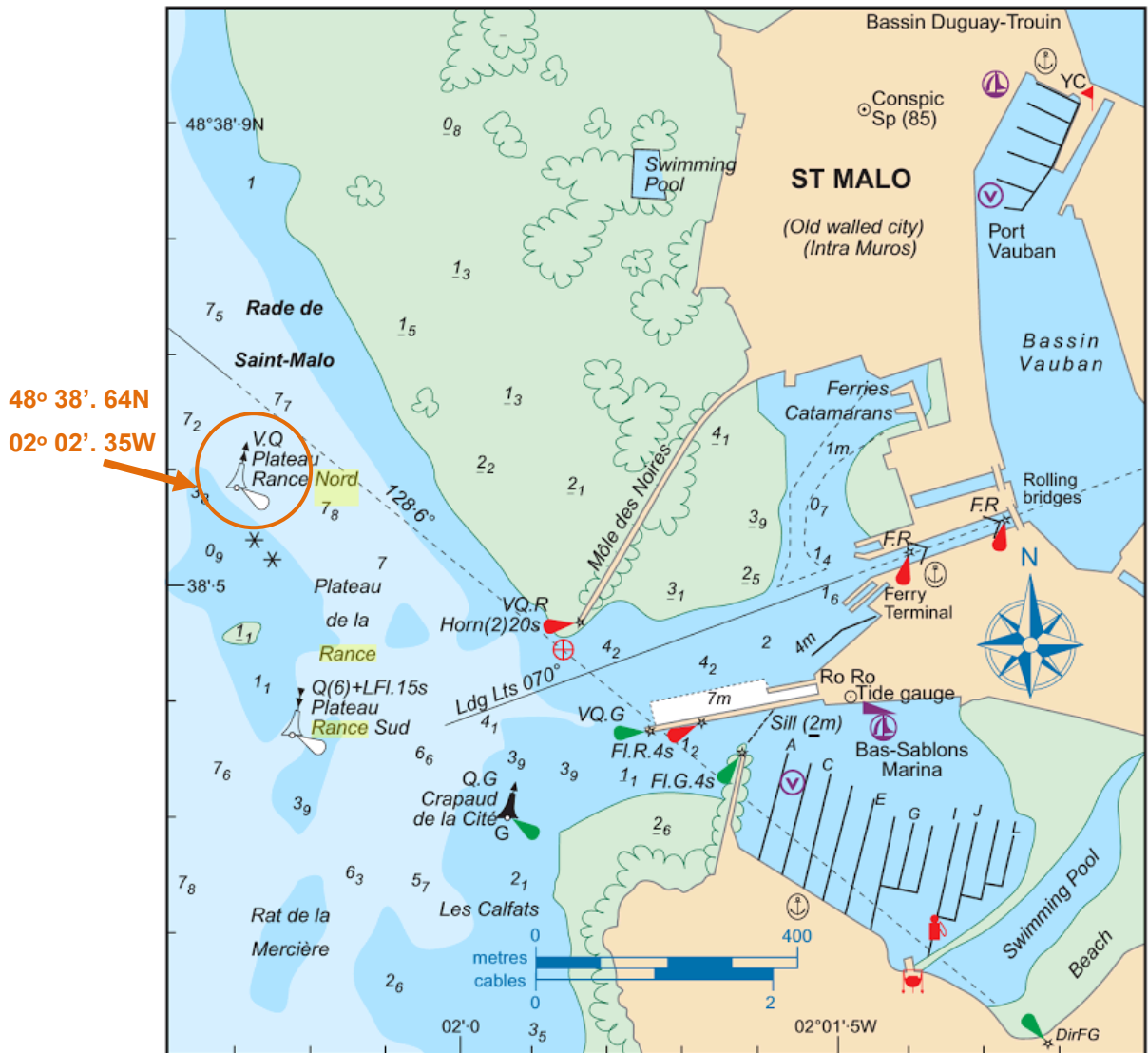
The RWYC will use VHF Channel 77.

1.20 SELF STEERING

The use of self steering devices is permitted.

2. APPENDICES

2.1 APPENDIX 1



2.2 APPENDIX 2

Thursday 2 August	11:13 AM	CEST	10.79 meters	(35.40 ft)	High Tide	Saturday 4 August	12:37 PM	CEST	10.07 meters	(33.04 ft)	High Tide
	12:17 PM	CEST			Moonset		2:33 PM	CEST			Moonset
	6:00 PM	CEST	2.97 meters	(9.74 ft)	Low Tide		7:25 PM	CEST	3.66 meters	(12.01 ft)	Low Tide
	9:44 PM	CEST			Sunset		8:19 PM	CEST			Last Quarter
	11:30 PM	CEST	10.92 meters	(35.83 ft)	High Tide		9:41 PM	CEST			Sunset
Friday 3 August	12:27 AM	CEST			Moonrise	Sunday 5 August	1:03 AM	CEST	10.05 meters	(32.97 ft)	High Tide
	6:23 AM	CEST	2.95 meters	(9.68 ft)	Low Tide		1:19 AM	CEST			Moonrise
	6:44 AM	CEST			Sunrise		6:47 AM	CEST			Sunrise
	11:51 AM	CEST	10.47 meters	(34.35 ft)	High Tide		7:56 AM	CEST	3.71 meters	(12.17 ft)	Low Tide
	1:23 PM	CEST			Moonset		1:36 PM	CEST	9.64 meters	(31.63 ft)	High Tide
	6:39 PM	CEST	3.30 meters	(10.83 ft)	Low Tide		3:43 PM	CEST			Moonset
	9:43 PM	CEST			Sunset		8:23 PM	CEST	3.97 meters	(13.03 ft)	Low Tide
12:12 AM	CEST	10.52 meters	(34.52 ft)	High Tide	9:40 PM	CEST			Sunset		
12:51 AM	CEST			Moonrise	1:50 AM	CEST			Moonrise		
6:46 AM	CEST			Sunrise	2:11 AM	CEST	9.61 meters	(31.53 ft)	High Tide		
7:05 AM	CEST	3.33 meters	(10.93 ft)	Low Tide	6:48 AM	CEST			Sunrise		

**The ROYAL WESTERN YACHT CLUB of ENGLAND
PLYMOUTH TO ST MALO RACE 2018**



DECLARATION FORM

1 We declare that we have taken part in the above race:

YACHT NAME

and that all the Rules and Regulations governing this Race have been followed.

2 We declare that we started at

Time (BST)..... Date.....

We crossed the Finish at *Plateau Rance Nord BUOY* at:

Time (BST).....Date.....

3 Yacht ahead (if known)

4 Yacht astern (if known)

Signed (Skipper).....(Co- Skipper).....