



# The Brass Balls

Winter Dinghy Racing  
Saturday 7<sup>th</sup> January to Saturday 25<sup>th</sup> March

## NOTICE OF RACE

### 1 RULES

1.1 The regatta will be governed by the rules as defined in *The Racing Rules of Sailing (RRS)*, including the RYA Prescriptions and RYA Racing Charter.

1.2 The Exoneration Penalty and RYA Arbitration of the RYA Rules and Disputes procedures will be available. This is the preferred method of resolving disputes. See the following website:  
<http://www.rya.org.uk/racing/raceofficials/Pages/RulesDisputesProcess.aspx> for details.

1.3 Where boats are racing within the boundaries of the Port of Plymouth they are referred to the Dockyard Port of Plymouth Order 1999, a copy of which is displayed on the website (<https://www.gov.uk/government/groups/qhm-plymouth>) and Local Notices to Mariners. When the Race Committee believes that such regulations have been broken so as to bring the sport into disrepute it may act under RRS 60.2(c) requesting the Protest Committee to act under RRS 69.1(a), Allegation of Gross Misconduct.

1.4 Rule 44.1 is changed so that the Two-Turns Penalty is replaced by the One-Turn Penalty.

### 2 ADVERTISING

2.1 Boats may be required to display advertising chosen and supplied by the organizing authority.

### 3 ELIGIBILITY AND ENTRY

3.1 The regatta is open to dinghies and multihull dinghies with a current RYA PY handicap.

### 4 FEES

Entry Fee for:	RWYC members and Students	RWYC Academy Members Under 18 years	Non-members
Series	£30	£20	£ 50
Individual Race Day	£3	£2	£ 5

BAM! Bring a mate! 2 entry's together and you both get it for £40 each!

RWYCBAM! Royal Western Yacht Club Bring a mate.....! 2 entry's of RWYC's mates and entry of £25 each!

WoBAM! Women Bring a mate! We want to encourage more girls sailing so two girl boats get entry for £35!

## **5 SCHEDULE**

**5.1** Dates of racing: Every Saturday from the 7<sup>th</sup> of January to the 25<sup>th</sup> of March

**5.2** Number of races: There will be up to 3 races per day

**5.3** The scheduled time of the warning signal for the first race each day is 13.55.

## **6 SAILING INSTRUCTIONS**

The sailing instructions will be available after Midday on 29th September 2016 at the clubhouse.

## **7 VENUE**

**7.1** Attachment 1 shows the location of the racing areas.

## **8 THE COURSES**

**The courses to be sailed will be as follows:** racing will be around fixed and laid marks laid in the Cattewater and Plymouth Sound. See Appendix A for a discriptions of the Marks to be used and their approximate positions.

## **9 PENALTY SYSTEM**

**9.1** Rule 44.1 is changed so that the Two-Turns Penalty is replaced by the One-Turn Penalty.

## **10 SCORING**

**10.1** The Low Point System of RRS Appendix A will apply except as amended below

**10.2** Each day will constitute a mini-series with up to three races.

**10.3** 1 race is required to be completed to constitute a mini series

**10.4** Mini-series places will be calculated from the results of the races that day, no scores shall be excluded.

**10.5** 2 mini-series are required to be completed to constitute a series.

**10.6** (a) When fewer than 4 mini-series have been completed, a boat's series score will be the total of her mini-series scores.

(b) When from 5 to 6 mini-series have been completed, a boat's series score will be the total of her race scores excluding her worst mini-series score.

(c) When from 7 to 8 mini-series have been completed, a boat's series score will be the total of her race scores excluding her worst two mini-series scores.

(d) When from 9 to 12 mini-series have been completed, a boat's series score will be the total of her race scores excluding her worst three mini-series scores.

- (c) When 12 or mini-series have been completed, a boat's series score will be the total of her race scores excluding her four worst mini-series scores.

## **11 BERTHING**

Boats can be kept at Queen Anne's Battery Marina for £60 for the duration of the series. Contact the Club directly to take up this offer.

## **12 RADIO COMMUNICATION**

Except in an emergency, a boat shall neither make radio transmissions while racing nor receive radio communications not available to all boats. This restriction also applies to mobile telephones.

## **13 PRIZES**

Prizes will be awarded each Saturday to the top boat in each class and a selection of other boats at the race committee's discretion. (nominations are welcome each day)

The top 3 boats in each class will be awarded overall prizes at the end of the seires. Any class of more than 4 boats will be awarded their own prize.

## **14 Risk Statement**

Rule 4 of the Racing Rules of Sailing states: "The responsibility for a boat's decision to participate in a race or to continue racing is hers alone."

Sailing by its nature an unpredictable sport and therefore inherently involves an element of risk. By taking part in the event, each competitor agrees and acknowledges that:-

- (a) They are aware of the inherent element of risk involved in the sport and accept responsibility for the exposure of themselves, their crew and their boat to such inherent risk whilst taking part in the event;
- (b) They are responsible for the safety of themselves, their crew, their boat and their other property whether afloat or ashore;
- (c) They accept responsibility for any injury, damage or loss to extent caused by their own actions or omissions;
- (d) Their boat is in good order, equipped to sail in the event and they are fit to participate;
- (e) The provision of a race management team, patrol boats, umpires and other officials and volunteers by the event organizer does not relieve them of their own responsibilities;
- (f) The provision of patrol boat cover is limited to such assistance, particularly in extreme weather conditions, as can be practically provided in the circumstances;

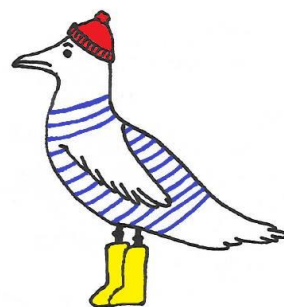
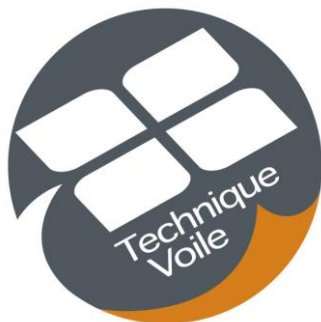
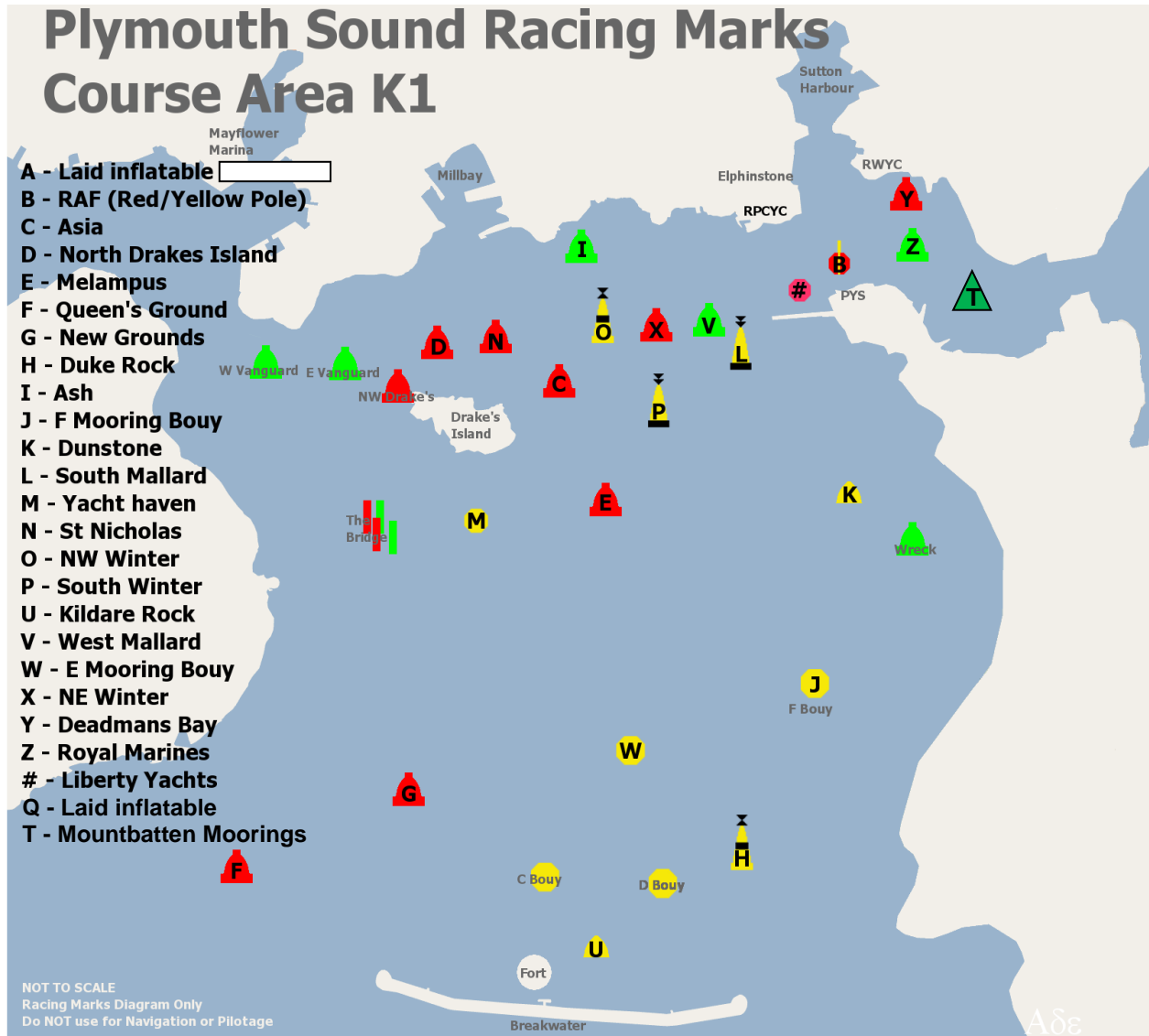
**15 INSURANCE**

Each participating boat shall be insured with valid third-party liability insurance with a minimum cover of £2,000,000 per incident or the equivalent.

**16 FURTHER INFORMATION**

For further information please contact [admin@rwy.org](mailto:admin@rwy.org)

**Attachement 1:**



Highwater Ltd.