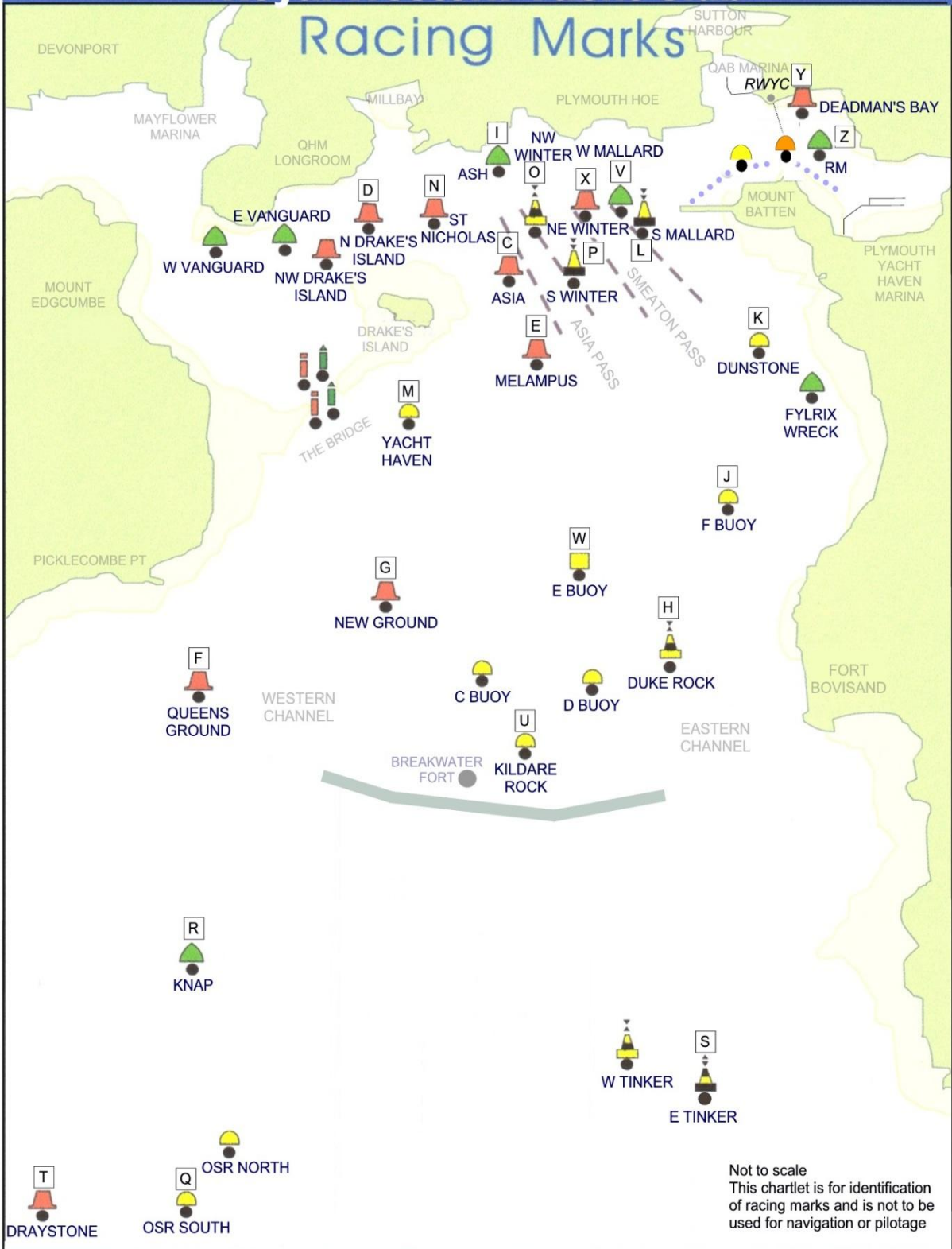


## Racing Marks



Not to scale  
This chartlet is for identification of racing marks and is not to be used for navigation or pilotage

- |                                       |                  |                |                  |
|---------------------------------------|------------------|----------------|------------------|
| A LAID INFLATABLE BUOY (WINDWARD)     | G NEW GROUND     | N ST NICHOLAS  | U KILDARE ROCK   |
| A+ LAID INFL BUOY (WINDWARD SPREADER) | H DUKE ROCK      | O NW WINTER    | V WEST MALLARD   |
| B LAID INFLATABLE BUOY (LEEWARD)      | I ASH            | P SOUTH WINTER | W E MOORING BUOY |
| C ASIA                                | J F MOORING BUOY | Q OSR SOUTH    | X NE WINTER      |
| D NORTH DRAKE'S ISLAND                | K DUNSTONE       | R K NAP        | Y DEADMAN'S BAY  |
| E MELAMPUS                            | L SOUTH MALLARD  | S EAST TINKER  | Z ROYAL MARINE   |
| F QUEENS GROUND                       | M YACHT HAVEN    | T DRAYSTONE    |                  |