

## **PLYMOUTH - St MALO Pursuit**

Organising Authority: The Royal Western Yacht Club of England

### **1 NOTICE OF PURSUIT**

#### **1.1 RULES**

Rule 10 of the International Regulations for Preventing Collisions at Sea (Separation Zones) shall be strictly observed.

The ISAF Offshore Special Regulations Category 3 shall apply. Additionally boats shall carry a life raft in accordance with ISAF Offshore Special Regulations 4.20.2

The Dockyard Port of Plymouth Order (DPPO), the Plymouth Local Notices to Mariners (PLNTM), and any local regulations within other ports shall apply. In particular, regulations regarding the safe navigation of large vessels shall be strictly observed. Details of the DPPO and PLNTM are displayed on the RWYC notice board and website.

The Series will be governed by the rules as defined in The Racing Rules of Sailing.(RRS).

RRS are changed as follows..

IRC Rule 22.4.2 is replaced with:

“The maximum number of crew that may sail aboard a boat shall be the crew number printed on the IRC certificate plus two. There is no weight limit.”

1.1.5 The World Sailing Offshore Special Regulations (OSR) Category 4 shall apply. ([www.sailing.org/specialregs](http://www.sailing.org/specialregs)). Additionally, boats shall carry a life raft in accordance with World Sailing Offshore Special Regulations 4.20.2.

#### **1.2 ELIGIBILITY AND ENTRY**

Open to all boats of Division CRUISER, IRC, ORC, MOCRA & MOTORCRUISER:

- IRC DIVISION – for yachts with a current IRC certificate.
- ORC DIVISION - for yachts with a current ORC certificate.
- MOCRA DIVISION – for yachts holding a current MOCRA certificate.
- CRUISER DIVISION – for yachts holding a current Port Handicap issued by the Port of Plymouth Sailing Association (PPSA).

The current list of Port Handicaps (Port TCF) can be found at:  
<http://plymouthsailingassociation.org.uk/racing/handicap-list>

If an entrant does not have a PPSA Port Handicap, they should apply to the PPSA Port Handicapper, Tony Head; email [tony-head@lineone.net](mailto:tony-head@lineone.net) as soon as possible.

- MOTORCRUISERS RALLY – Motorcruisers can accompany as part of the rally to St Malo (Free!) – we ask that you stay in contact throughout your cruise over with the race organization (VHF Channel 77)

Eligible boats may enter by completing the RWYC Pursuit Entry Form and sending it, together with the required fee, to the RWYC by Tuesday 15 June 2017.

Late entries will be accepted, with payment of an additional Late Entry fee, up to 24 hours before the start.

### 1.3 FEES

Entry Fee for:	RWYC members	Non-members
St Malo Pursuit – All classes excluding Motorcruisers	£ 35	£ 50

### 1.4 SCHEDULE:

Dates:

Pursuit	Date	Start
Plymouth – St Malo	15 June	18:30 - onwards
<b><i>OFFICIAL START TIME IS 18:30 ON THURSDAY 15<sup>TH</sup> JUNE.</i></b> <b><i>YOU WILL BE TAKING YOUR OWN START TIME &amp; FINISH TIME</i></b>		

### 1.5 RADIO COMMUNICATIONS

All boats shall carry and operate a VHF radio and entrants should use Channel 77.

### 1.6 PRIZES

A prize will be presented to the winner of each class on Friday 16th June at the SMBSM at bar L'Atterage. There will be a prize for the best dressed motorcruiser!

Official prizegiving will take place at the RWYC prizegiving in November/December. –Trophies & engraved glassware will be awarded to the first in each class.

### 1.7 DISCLAIMER OF LIABILITY

A boat is entirely responsible for her own safety, whether afloat or ashore, and nothing, whether in the Notice of Pursuit or Sailing Instructions or anywhere else, reduces this responsibility.

It is for a boat to decide whether she is fit to sail in the conditions in which she will find herself. By launching, or going to sea, the boat confirms that she is fit for those conditions and her crew is competent to sail and compete in them.

Nothing done by the organisers can reduce the responsibility of the boat nor will it make the organisers responsible for any loss, damage, death or personal injury, however it may have occurred, as a result of the boat taking part in the racing. The organisers encompass everyone helping to run the Pursuit and the event, and include the organising authority, the RWYC, the Pursuit officer, patrol boats and beachmasters.

The boat is responsible to ensure that she is equipped and seaworthy so as to face extremes of weather; that there is a crew sufficient in number, experience and fitness to withstand such weather; and that the safety equipment is properly maintained, stowed and in date and that the crew knows how to use it.

## SAILING INSTRUCTIONS

### 1.8 RULES

- 1.9 **The World Sailing Offshore Special Regulations (OSR) Category 4 shall apply.**  
([www.sailing.org/specialregs](http://www.sailing.org/specialregs)). Additionally, boats shall carry a life raft in accordance with World Sailing Offshore Special Regulations 4.20.2.

### 1.10 NOTICES TO ENTRANTS

Notices to entrants will be posted on the notice board at the RWYC.

Should there be any amendments to the Sailing Instructions, Flag L will be hoisted at the appropriate club's flagstaff and it will be the responsibility of all entrants to obtain the amended instructions from that club. Any amendment will be made by 2100 on the day before it will take effect.

### 1.11 SCHEDULE OF PURSUITS and CLASS FLAGS

Date of Pursuit: Thursday 15 June 2017.

The scheduled times of Pursuit start are

Class	Pennant - Flag	Start
IRC	1	18:30- onwards
ORC	1	18:30 – onwards
Mocra	1	18:30- onwards
Cruiser	4	18:30- onwards
Motorcruiser Rally	N/A	18:30 - onwards

Class Flags shall be flown from the backstay.

### 1.12 THE COURSE

From the Eastern entrance of Plymouth Sound Breakwater to Port then to the Finish Line off St Malo – which leaves the *Plateau Rance Nord BUOY* (See Appendix 1)(to Starboard at a bearing of 270 degrees.

### 1.13 THE START

The Start Line will be the Eastern entrance to Plymouth Sound on a bearing of 270 degrees (T).

Entrants will self start and record their starting time.

### 1.14 THE FINISH

*Plateau Rance Nord BUOY*(see Appendix 1) (48 °38'.64N 02°02'.35W) bearing 270, leaving the buoy to STARBOARD.

Entrants will record their own finish time, together with the names and sail numbers of the boats ahead and astern of them when ascertainable. The start and finish times shall be forwarded to Andy Sinclair ([andy@technique-voile.co.uk](mailto:andy@technique-voile.co.uk)) or text to Beth Hayward (+447456020332), who will be inputting the results.

### 1.15 TIDAL DATA (LOCAL) – See APPENDIX 2 \*\*\*\*\*IMPORTANT\*\*\*\*\*

### 1.16 RETIREMENT

Boats retiring shall inform the RWYC as soon as possible and in any case within 2 hours of the expiry of the time limit.

Retirements may be reported by telephone call or text to the RWYC - Beth Hayward +447456020332 or Hannah Hayward +447456215001

### 1.17 RADIO COMMUNICATIONS

All boats shall carry and operate a VHF radio.

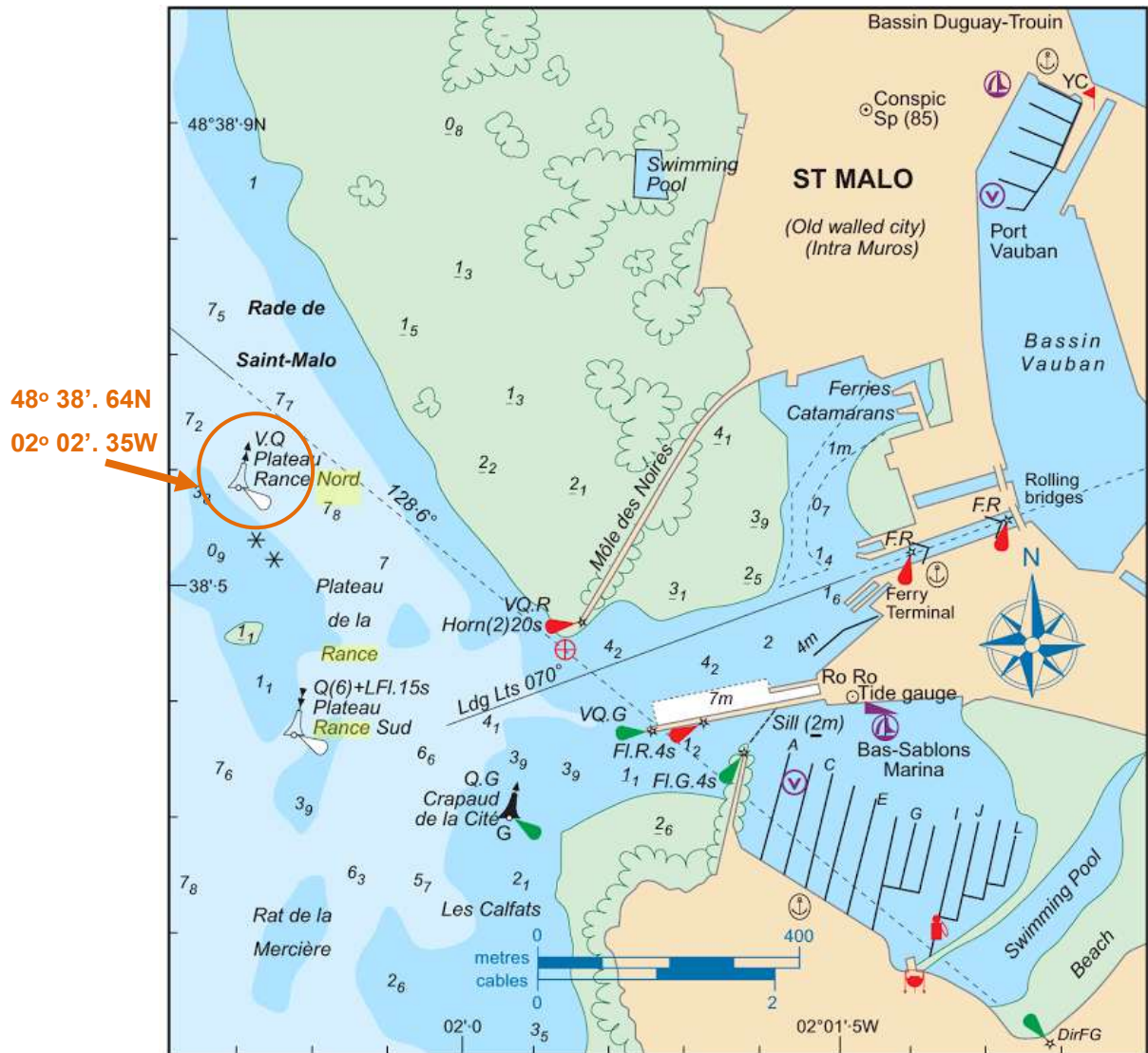
The RWYC will use VHF Channel 77.

### 1.18 SELF STEERING

The use of self steering devices is permitted.

## 2. APPENDICES

### 2.1 APPENDIX 1



## 2.2 APPENDIX 2

<b>Thursday 15<sup>th</sup> June</b>	<b>6:05 AM</b>	3.11 metres	<b>(10.20 ft)</b>	<b>Low Tide</b>
	<b>11:28 AM</b>	10.19 metres	<b>(33.43 ft)</b>	<b>High Tide</b>
	<b>6:22 PM</b>	3.49 metres	<b>(11.45 ft)</b>	<b>Low Tide</b>
	<b>11:47 PM</b>	10.31 metres	<b>(33.83 ft)</b>	<b>High Tide</b>
<b>Friday 16<sup>th</sup> June</b>	<b>6:50 AM</b>	3.37 metres	<b>(11.06 ft)</b>	<b>Low Tide</b>
	<b>12:15 PM</b>	9.84 metres	<b>(32.29 ft)</b>	<b>High Tide</b>
	<b>7:10 PM</b>	3.75 metres	<b>(12.30 ft)</b>	<b>Low Tide</b>
<b>Saturday 17<sup>th</sup> June</b>	<b>12:39 AM</b>	9.97 metres	<b>(32.71 ft)</b>	<b>High Tide</b>
	<b>7:41 AM</b>	3.58 metres	<b>(11.75 ft)</b>	<b>Low Tide</b>
	<b>1:13 PM</b>	9.53 metres	<b>(31.27 ft)</b>	<b>High Tide</b>
	<b>8:06 PM</b>	3.91 metres	<b>(12.83 ft)</b>	<b>Low Tide</b>

\*\*\*\*\*PLEASE NOTE – The sill at Les Bas-Sablon Marina dries at 2m\*\*\*\*\*

**You may be required to wait until the tide has risen to enter or leave the marina.**

## **Other Information**

Race office at arrival will be at the SMBSM at bar L'Atterage

Les Bas-Sablons Marina

02-99-81-71-34 (office telephone opening times: 0900-1200 or 1400-1730)

[port.plaisance@saint-malo.fr](mailto:port.plaisance@saint-malo.fr)

[www.ville-saint-malo.fr](http://www.ville-saint-malo.fr)

