



ROYAL WESTERN
YACHT CLUB OF ENGLAND

2017 Wolf Rock Race

Saturday 27th May 2017

SAILING INSTRUCTIONS

Royal Western Yacht Club of England Ltd
Queen Anne's Battery
Plymouth
Devon
PL4 0TW



ROYAL WESTERN

YACHT CLUB OF ENGLAND

SAILING INSTRUCTIONS

Competitors and their families are invited by the Flag Officers of The Royal Western Yacht Club to be temporary members of the Club for on Sundays for the duration of the Autumn Series and to make full use of the bar, catering and other facilities of the Club.

1 RULES

- 1.1 The race will be governed by the rules as defined in *The Racing Rules of Sailing*.
- 1.2 *RRS 44.1 Taking a Penalty. The Two Turns Penalty is replaced by the One Turn Penalty*
- 1.3 Boats shall comply with ISAF OSR Cat 4 regulations. Additionally, boats shall carry a life raft in accordance with World Sailing Offshore Special Regulations 4.20.2. The Race Committee reserves the right to inspect boats to ensure compliance.
- 1.4 Where boats are racing within the boundaries of a port they shall comply with such regulations as may be in force within that port. In particular, regulations regarding the safe navigation of large vessels shall be strictly observed. Competitors are referred to the Dockyard Port of Plymouth Order 1999, a copy of which is displayed on the Club notice board and website, and to Local Notices to Mariners. When the Race Committee believes that such regulations have been broken so as to bring the sport into disrepute it will act under RRS 60.2(c) requesting the Protest Committee to act under RRS 69.1(a), Allegation of Misconduct.
- 1.5 The Exoneration Penalty (and the Advisory Hearing and RYA Arbitration) of the RYA Rules and Disputes procedures will be available. This is the preferred method of resolving disputes. See the official notice board or website for details.
- 1.6 Between sunset and sunrise RRS Part 2 (When Boats Meet) is replaced by Part B (Steering & Sailing) of the International Regulations for the Prevention of Collisions at Sea (IRPCAS).
- 1.7 Racing rule(s) 35 will be changed as follows:
35 – Time Limit – the time limit for the race will be 1000 on Monday 30th May.
- 1.8 Under rule 87, rule(s) IRC Rule 22.4.2 of the IRC class rules is replaced with:
“The maximum number of crew that may sail aboard a boat shall be the crew number printed on the certificate plus two. There is no weight limit.”
- 1.9 Autopilots and self-steering devices may be used.

2 Class Flags

- 2.1 Class Flags shall be flown from the backstay when racing. Class flags are as follows.

Class	Flag
IRC	1
Port Handicap	2
MOCRA	3

- 2.2 The first warning signal will be at 0855. Class starts may be combined. If there is more than one start, subsequent starts will be at five minute intervals

3 RADIO COMMUNICATIONS

- 3.1 All yachts shall carry and operate a VHF radio and monitor Race Committee broadcasts. Except in an emergency, yachts shall neither make nor receive communications which are not available to other yachts competing in the race. This restriction also applies to communication by mobile phone.
- 3.2 The Race Committee will use VHF Ch 77.
- 3.3 The failure to receive any Race Committee transmissions shall not constitute grounds for redress.

4 SIGNALS

- 4.1 Signals made ashore will be displayed at the RWYC Flagstaff.

5 NOTICES TO COMPETITORS

- 5.1 Notices to competitors will be posted on the RWYC website on the event page. This shall be deemed to be the official noticeboard.
- 5.2 Any change to the sailing instructions will be posted by 1800 on Friday 26th May 2017.

6 THE COURSE

- 6.1 The course will be from the Start Line, round Wolf Rock to port and then to the Finish Line.

7 THE START

- 7.1 The start line will be between the mast displaying an orange flag on a Committee Boat and the outer distance mark, an orange pillar buoy.
- 7.2 All boats shall pass close to the Committee Boat on the side opposite to the Start Line before the start of the race with mainsails hoisted for identification. Boats are asked to contact the committee boat by VHF to confirm the number of crew they have on board.

8 RECALLS (This changes rule 29.2)

- 8.1 A broadcast message may be transmitted on VHF Ch 77 at least one minute after the start.

9 FINISH

- 9.1 The finish line will be between an extension of a line from the flagpole of the RWYC through the orange and Black Post in front of the clubhouse. Finishers are asked to take note of their finish time and, if possible to note the number of the boat in front and behind and to report that information to RWYC either by telephone (01752 660077) or by e-mail to admin@rwyg.org.

10 PROTESTS

- 10.1 For each class, the protest time limit is 1200 on Monday 30th May. The same time limit applies to protests by the race committee and protest committee about incidents they observe in the racing area and to requests for redress.
- 10.2 **Protest Forms may be obtained from the RWYC office or downloaded from the RYA website. Completed forms should be submitted to the RWYC office**

11 RETIREMENT

- 11.1 Boats retiring shall report their retirement to the Race Committee as soon as possible.
- 11.2 Retirements shall be reported via VHF Ch 77 to the Committee Vessel callsign "FULMAR", or by telephone to RWYC telephone: 01752 660077 or to the Race Officer on 01822 853421 or 07881954563

12 RISK STATEMENT

- 12.1 Rule 4 of the Racing Rules of Sailing states: "The responsibility for a boat's decision to participate in a race or to continue racing is hers alone".

12.2 Sailing is by its nature an unpredictable sport and therefore inherently involves an element of risk. By taking part in the event, each competitor agrees and acknowledges that: they are aware of the inherent element of risk involved in the sport and accept responsibility for the exposure of themselves, their crew and their boat to such inherent risk whilst taking part in the event;

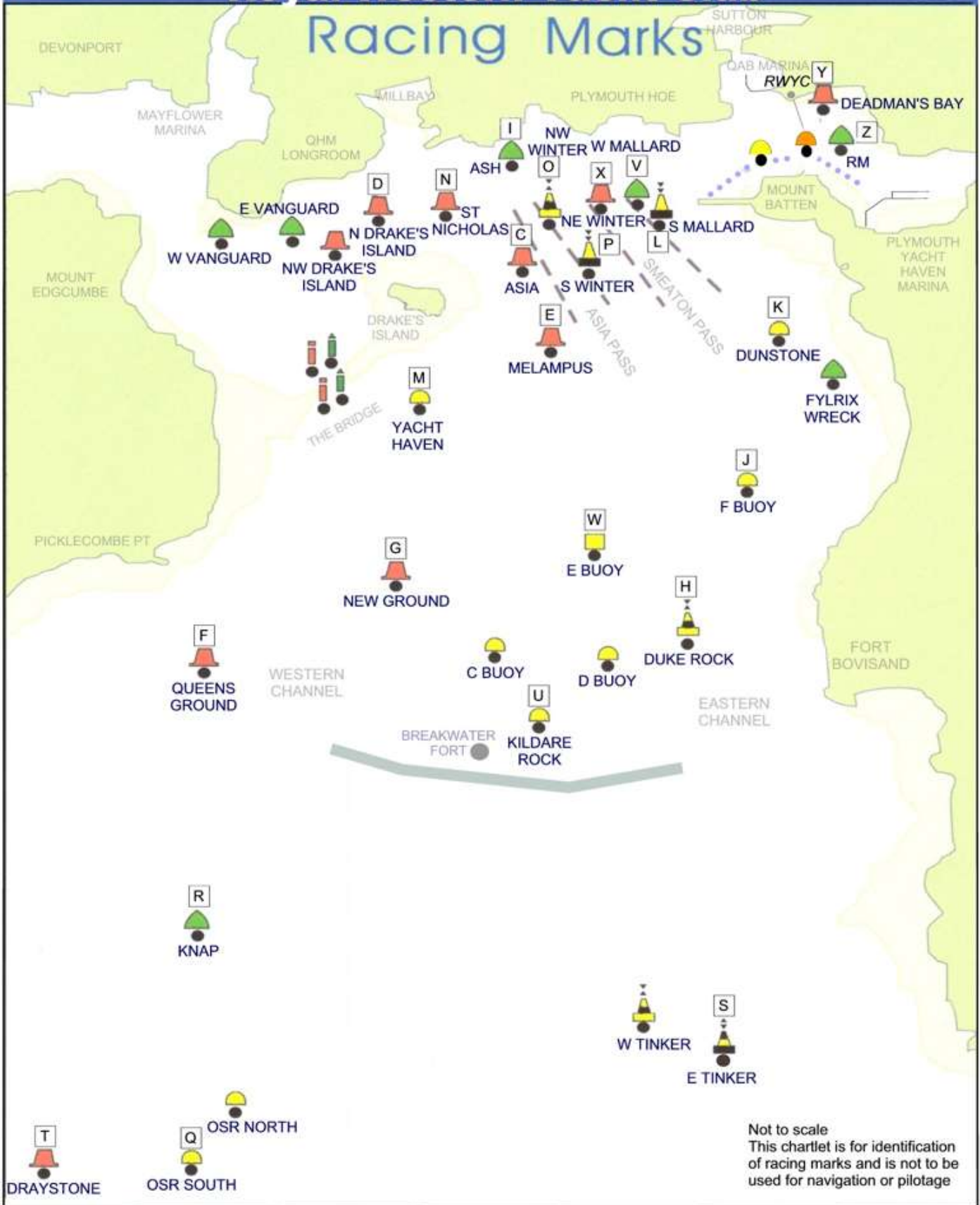
- a. they are responsible for the safety of themselves, their crew, their boat and their other property whether afloat or ashore;
- b. they accept responsibility for any injury, damage or loss to the extent caused by their own actions and omissions;
- c. their boat is in good order, equipped to sail in the event and they are fit to participate; provision of a race management team, patrol boats and other officials and volunteers by the event organiser does not relieve them of their own responsibilities;
- d. provision of patrol boat cover is limited to such assistance, particularly in extreme weather conditions, as can be practically provided in the circumstances.

13 INSURANCE

- 13.1 Each participating boat is required to hold adequate insurance and in particular to hold insurance against third-party claims in the sum of at least £2,000,000.

Royal Western Yacht Club

Racing Marks



Not to scale
This chartlet is for identification of racing marks and is not to be used for navigation or pilotage

- | | | | |
|---------------------------------------|------------------|----------------|------------------|
| A LAID INFLATABLE BUOY (WINDWARD) | G NEW GROUND | N ST NICHOLAS | U KILDARE ROCK |
| A+ LAID INFL BUOY (WINDWARD SPREADER) | H DUKE ROCK | O NW WINTER | V WEST MALLARD |
| B LAID INFLATABLE BUOY (LEEWARD) | I ASH | P SOUTH WINTER | W E MOORING BUOY |
| C ASIA | J F MOORING BUOY | Q OSR SOUTH | X NE WINTER |
| D NORTH DRAKE'S ISLAND | K DUNSTONE | R KNAP | Y DEADMAN'S BAY |
| E MELAMPUS | L SOUTH MALLARD | S EAST TINKER | Z ROYAL MARINE |
| F QUEENS GROUND | M YACHT HAVEN | T DRAYSTONE | |